

## PRODUCT OVERVIEW



### IPSi1200 INTELLIGENT PURE SINE INVERTER

The IPSi1200 series Intelligent Pure Sinewave Inverter is designed specifically for powering computers and other sensitive AC loads in rugged, mobile, off-grid environments. It produces pure sinewave AC power, identical to that from a conventional AC outlet.

Internally, the IPSi1200 is controlled by a sophisticated Digital Signal Processor (DSP) for optimal control and the most efficient operation. The heavy-duty Toroidal Power Transformer steps the low voltage AC produced by the Power MOSFET Transistors to 110 VAC at 50 or 60 Hz. Additional filtering on the output reduces and eliminates EMI noise that can interfere with sensitive communications equipment.

Built for the safety and reliability, this unit features low input voltage warning with shutdown circuitry to protect the power source. While the Inverter is safeguarded by high voltage and over temperature protection both with shutdown circuitry. All alarm conditions can be monitored on the bright LED indicator display on the unit's front panel.

### Available models

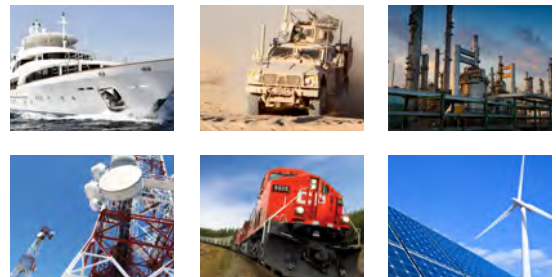
#### Input

|                       |
|-----------------------|
| 12VDC                 |
| 24, 28, 32, or 36 VDC |
| 48 or 72 VDC          |
| 125VDC                |

#### Output

|                                      |
|--------------------------------------|
| 110VAC, 60Hz ( 50Hz user-selectable) |
|--------------------------------------|

### Applications



## TECHNICAL SPECIFICATIONS

| INPUT                                   | -12  | -20          | -40   | -125          |
|---|--|--------------|---|---------------|
| Nominal                                 | 12 VDC   | 24 or 36 VDC | 48 or 72 VDC  | 125 VDC       |
| Actual (Vdc)                            | 10.5-16 VDC  | 20 - 45 VDC  | 40 - 80 VDC   | 100 - 140 VDC |
| Input Fuse<br>(External, user supplied) | 152 Amp  | 84 Amp       | 46 Amp  | 16 Amp        |
| OUTPUT                                  | -110V  |              |   |               |
| Nominal Voltage                         | 110 ± 2 VAC  |              |   |               |
| Output Volts Adjust Range               | ± 10 VAC   |              |   |               |
| Max Amps                                | 10A (cont.) / 12A (peak)   |              |   |               |
| Output Frequency                        | 50.00 or 60.00 Hz ± 0.01 Hz (user-selectable)  |              |   |               |
| Output Distortion                       | < 2% at 1200 Watts into resistive load   |              |   |               |
| Regulation (Line & Load)                | < +/- 2.0%   |              |   |               |
| Duty Cycle                              | <b>Continuous:</b> 100% for 24 hrs. per day / <b>Peak:</b> 10% for 1 min. per hr.  |              |   |               |
| Efficiency                              | 90% @ Maximum Output   |              |   |               |
| Transfer time                           | < 19 milliseconds (Off-line UPS Option)  |              |   |               |
| MECHANICAL                              |  |              |   |               |
| Length                                  | 12.3 in / 31.2 cm  |              |   |               |
| Width                                   | 9.4 in / 23.9 cm (including lifting handles)   |              |   |               |
| Height                                  | 7.8 in / 19.8 cm   |              |   |               |
| Clearance                               | 1.0 in / 2.5 cm all around   |              |   |               |
| Weight                                  | 30.0 lb / 13.6 kg (estimated)  |              |   |               |
| Material and Finish                     | Marine Grade Black Anodized Aluminum with 18-8 Stainless Fasteners   |              |   |               |
| Mounting                                | Shelf Mount  |              |   |               |
| Connections                             | <b>DC Input:</b><br>Marathon ST722B2502UH, 175Amp,<br>300V Rating c/w Protective Snap On<br>Cover<br><b>AC Output (1):</b> Phoenix VDFK 4 Feed Through Connector<br><b>AC Output (2):</b> 1 x NEMA 5-15 Receptacle |              | <b>DC Input (-125):</b><br>Red and Black Phoenix<br>VDFK 4 Feed Through<br>Connectors |               |
| ENVIRONMENTAL AND SAFETY                |  |              |   |               |
| Operating Temperature                   | -25°C to +40°C @ continuous output<br>(Optional -40°C to +55°C wide temperature range available)   |              |   |               |
| Isolation                               | Input-Output, Output-Case, and Input-Case 1500 VDC   |              |   |               |
| Humidity                                | 0 - 95% Relative Humidity<br>(non-condensing) with standard conformal coating  |              |   |               |
| Audible Noise                           | 34.5dB @ 3 feet / 1 meter (max fan speed)  |              |   |               |
| Warranty                                | Five Years   |              |   |               |
| Safety                                  | Built to meet CSA 22.2.107.1 & UL458 standards   |              |   |               |

## OPTIONS

- Off-line UPS option
- Heavy duty ruggedization
- Safety Special Inspection (CSA/UL)
- IP66 or IP67 Water Resistant Chassis

## DIMENSIONS

